

BRINGING DEMOCRACY DEFENDERS TOGETHER

DEM-DEC | DEMOCRATIC
DECAY & RENEWAL

www.democratic-decay.org

INFORMATION BOOKLET

Democratic Decay & Renewal (DEM-DEC) is an online resource designed to assist researchers and policymakers focused on the deterioration of democratic rule worldwide and rethinking democracy – and to help them work together.

DEM-DEC provides an information hub and platform for collaboration through a mixture of curated and user-generated content, including an Experts Database, Events Database, Research Updates, Teaching Materials, Concept Index, and Links.

www.democratic-decay.org

I	What is Democratic Decay?	4
2	Democratic Decay & Renewal (DEM-DEC)	12
3	What Leading Democracy Experts Say About DEM-DEC	19
4	Dr Tom Gerald Daly, Creator of DEM-DEC	26
5	DEM-DEC Team	28
6	DEM-DEC Partners	30
7	Contact	34

WHAT IS DEMOCRATIC DECAY?



Democratic decay refers to the pressing

GLOBAL CHALLENGE

posed by the

DETERIORATION OF

DEMOCRACIES

WORLDWIDE

Unlike the quick death of democracy
(e.g. by a coup d'état), democracy is

ERODED OVER TIME

and can be

**DIFFICULT TO
IDENTIFY**

until it is well advanced



After decades of expanding democracy worldwide, global democracy assessment organisations have registered declines every year since the mid-2000s, in states across every world region

e.g. Freedom House, Economist Intelligence Unit



Xenophobic, racist, and authoritarian populist governments and leaders have been elected across the world. Anti-democratic and illiberal political parties are on the rise. Politicians are increasingly unwilling to 'play by the rules'



Governments are attacking democratic organs (e.g. courts), civil society (e.g. media, human rights NGOs), and human rights

e.g. current attack on the Supreme Court in Poland, buyouts of independent media in Hungary



Government surveillance has increased. Police powers have been expanded

e.g. law on blanket surveillance in Hungary, Aadhar biometric controversy in India



Minorities are being targeted as scapegoats for societies' problems

e.g. anti-Semitism across Europe, attacks on immigrants in the USA and Hungary, attacks on Muslims in India and the USA

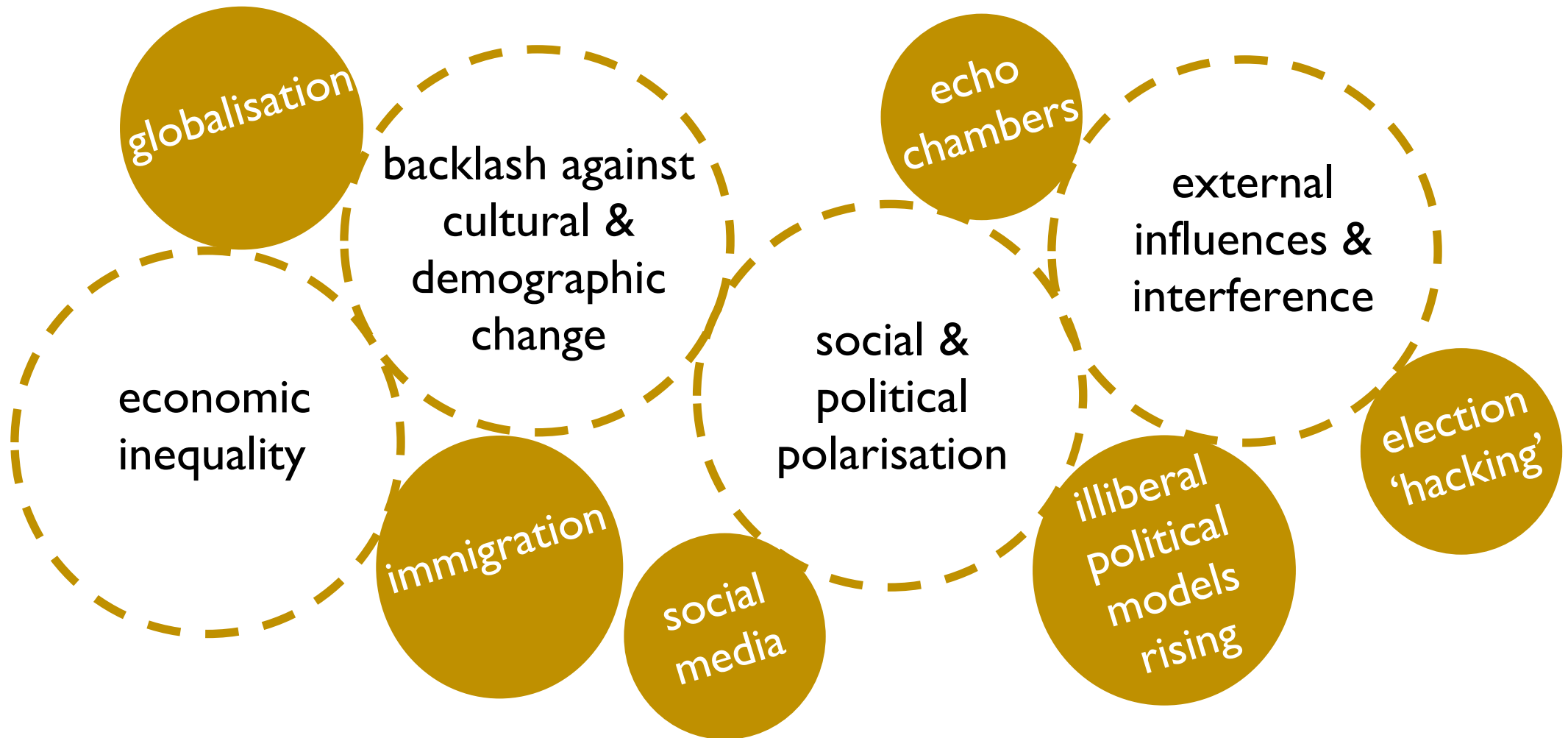


Public faith in democracy is falling in states worldwide

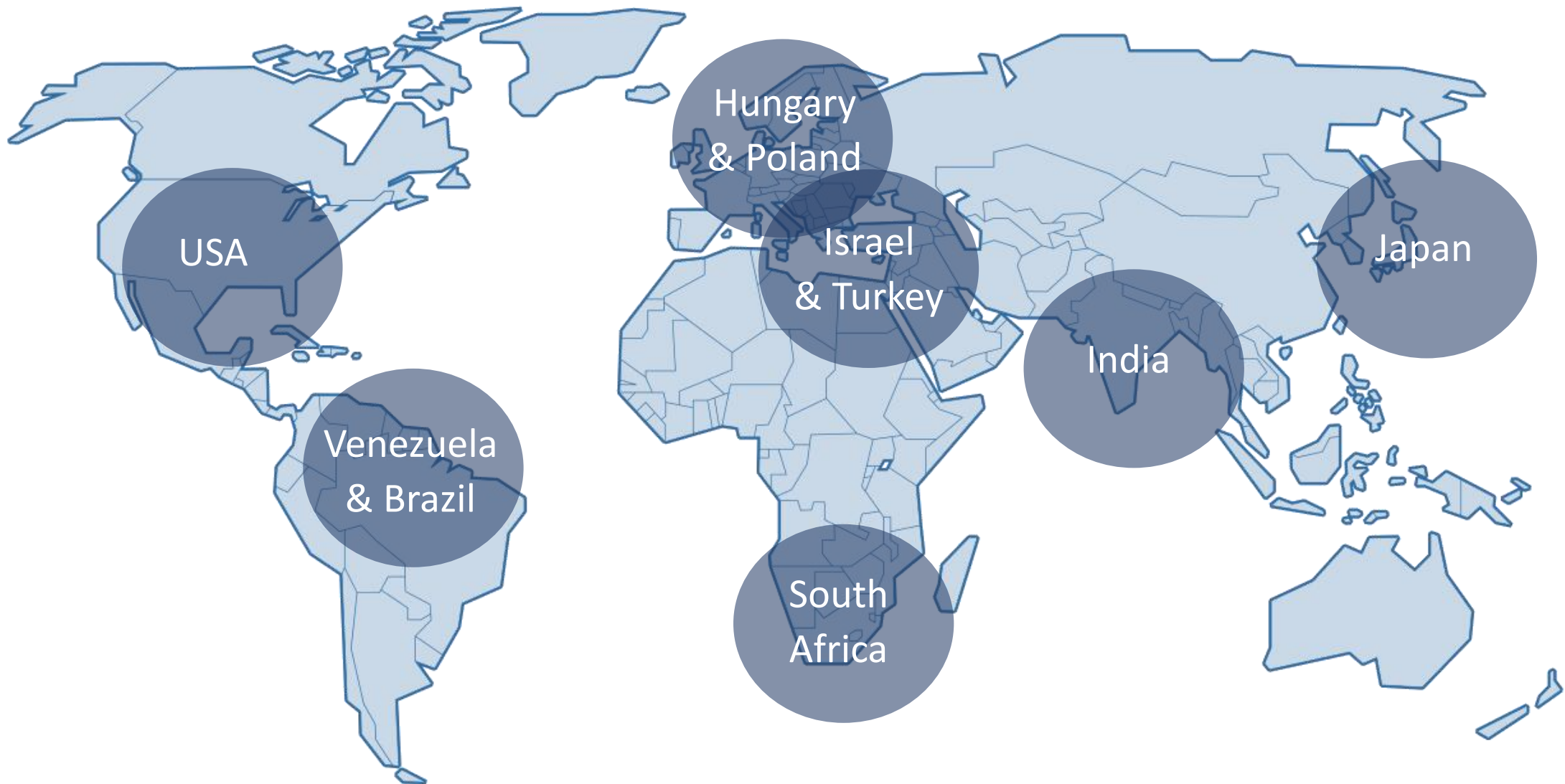
e.g. polls in many democracies show little public trust in political parties or parliaments, support for military rule is rising in states including USA and Brazil

DRIVERS OF DEMOCRATIC DECAY

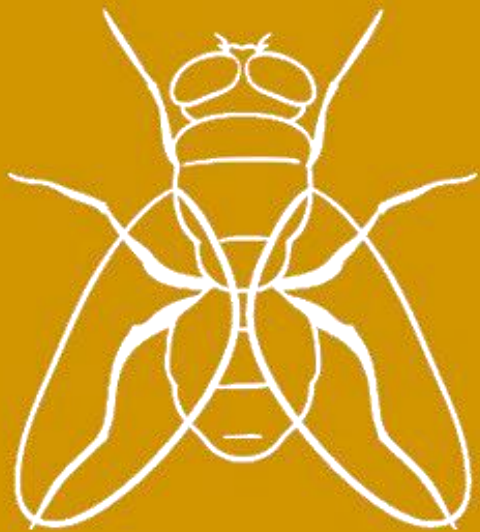
A range of internal and external drivers are discussed as underlying democratic decay. These include:



KEY STATES WHERE SERIOUS CONCERNS REGARDING DEMOCRATIC DECAY HAVE BEEN RAISED



DEMOCRATIC DECAY & RENEWAL (DEM-DEC)



DEM-DEC

DEM-DEC went live on 25 June 2018 and is designed to provide a useful hub, resource and platform for researchers and policymakers focused on addressing democratic decay.

DEM-DEC contains **7** key sections.



Research
Guides



Concept
Index



Experts
Database



Events
Database



Teaching
Materials



Campaigns



Links

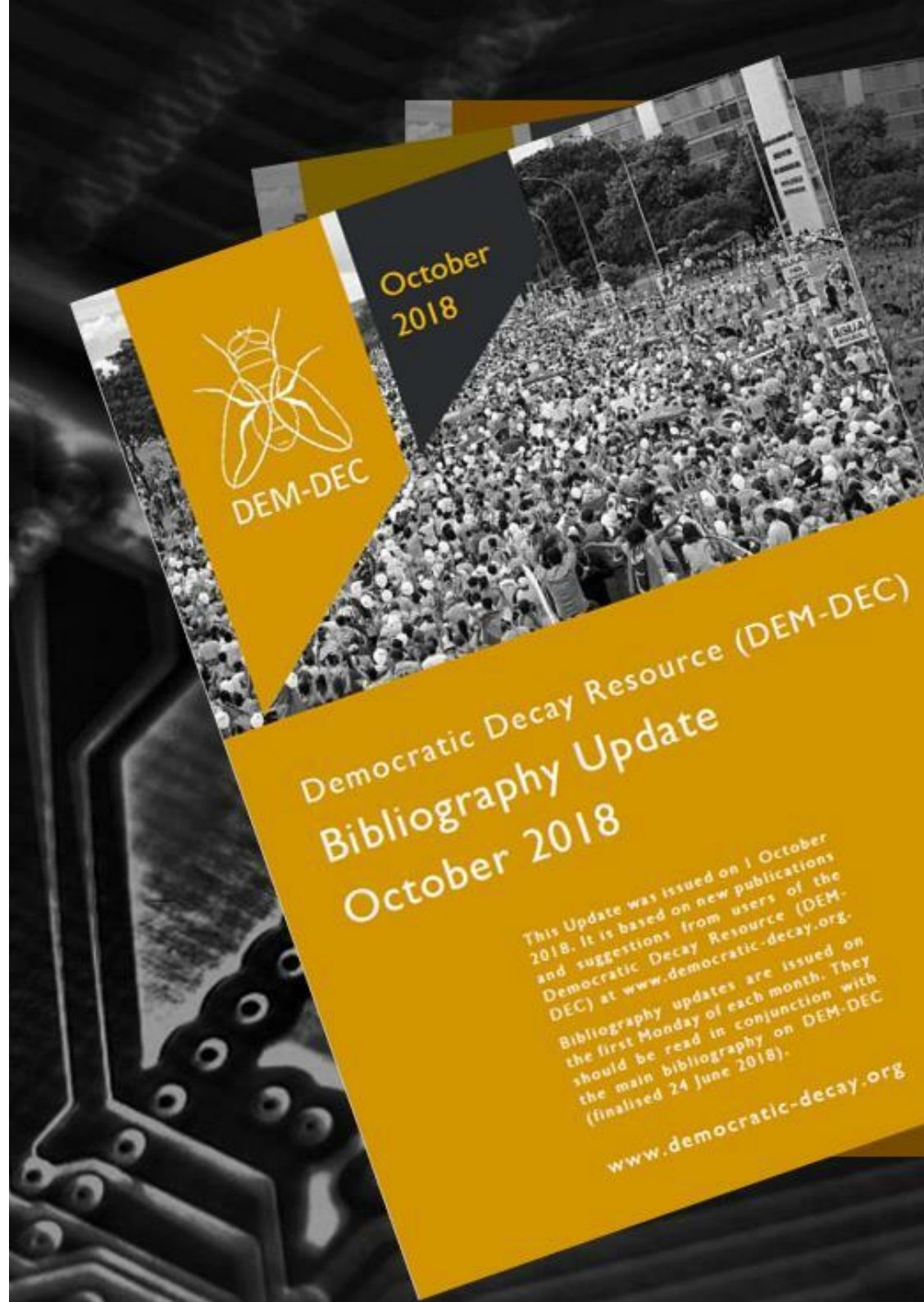


RESEARCH GUIDES

Research on democratic decay has mushroomed in the past 5 years but has until now been scattered across different research fields and policy reports. The bibliography on DEM-DEC sets out all key research on democratic decay, divided by themes, world regions and international organisations.

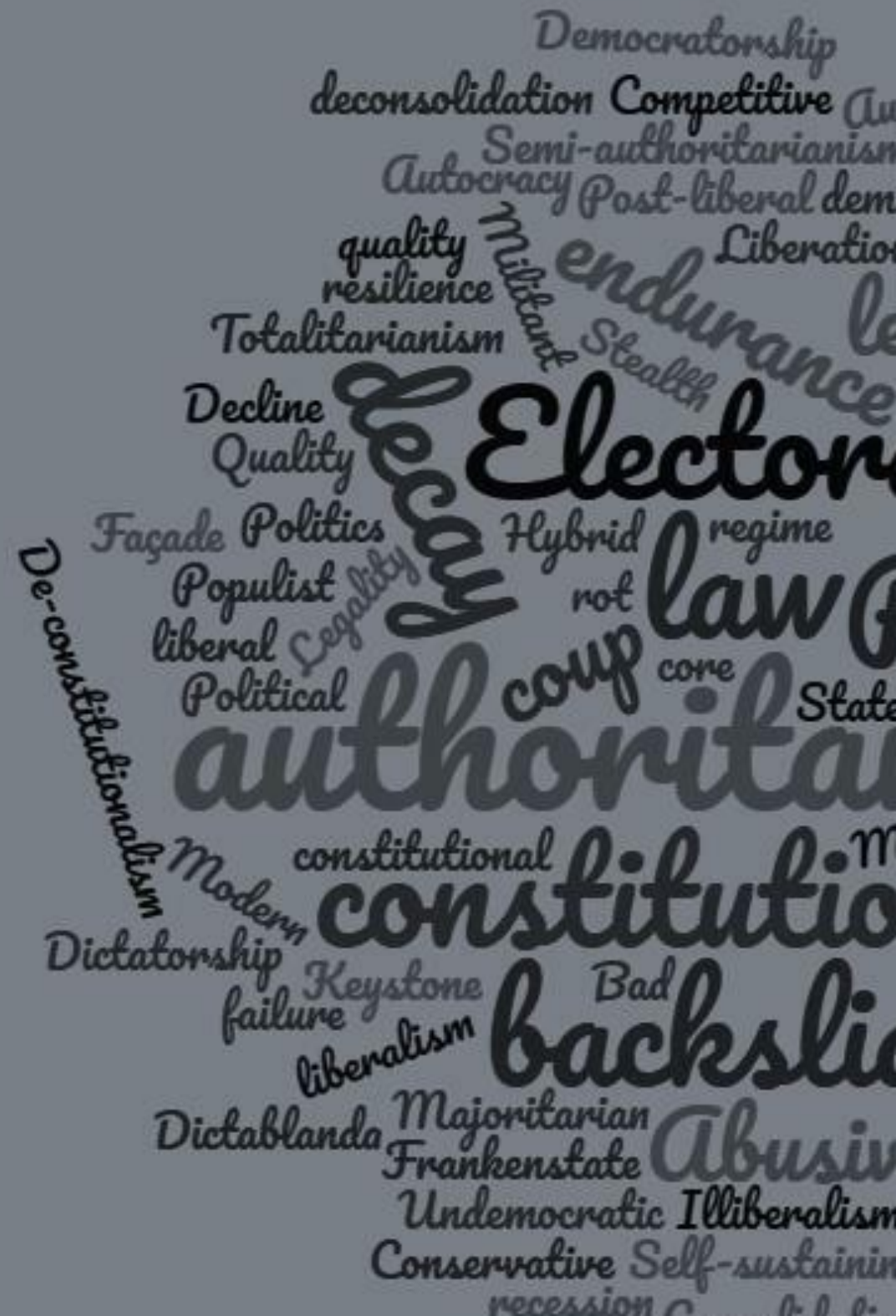
Research Updates are issued monthly, based on searches for new research and suggestions from DEM-DEC users, which include leading democracy experts.

You can suggest additions too – see the Research section on DEM-DEC for more details.





If you struggle to tell your 'autocratic legalism' from 'abusive constitutionalism', or 'constitutional rot' from 'democratic deconsolidation', head to the Concept Index, which contains definitions and explainers of some 80 key concepts in the field, including links to all key texts.





EXPERTS DATABASE

Experts on democratic decay are found in many different areas of the academic and policy worlds. Yet, experts often do not know who else is working on this issue. Policy organisations struggle to identify academic collaborators and vice versa. The Experts Database helps by providing useful lists of leading experts worldwide.

The Database has recently been expanded to include academics from more disciplines, and policymakers.

Not on the list? No problem - just fill out the feedback form and get added.





EVENTS DATABASE

Struggling to get a handle on the growing range of events on democratic decay worldwide?

Worried about duplicating an event happening elsewhere?

Keen to identify possible partners for an event, or simply want to know what events might be happening near you?

Check out the Events Database. Sections provide details of forthcoming events across the world as well as a list of past events.





TEACHING MATERIALS

Educating the next generation of democracy defenders is crucial.

The Teaching section provides a suite of resources for teaching students about democratic decay.

The principal resources are based on the course 'Understanding Democratic Decay Worldwide' first delivered by Dr Tom Gerald Daly at the University of Melbourne in 2018. These will be uploaded soon.

Additional teaching resources from other researchers are also available. You're your materials using the form provided or email democraticdecay@gmail.com





CAMPAIGNS

Although it is not primarily an advocacy tool, DEM-DEC engages in selected information campaigns.

DEM-DEC's first information campaign disseminated information booklets to members of the European Parliament (MEPs) in advance of a vote on 12 September 2018 on whether to trigger the EU treaty process against the Hungarian government for violation of fundamental EU values (including democracy and the rule of law).

DEM-DEC's second information compiled information on the leading presidential candidate Jair Bolsonaro in advance of the presidential elections in Brazil on 7 October 2018.

Go to the Campaigns section for more details.





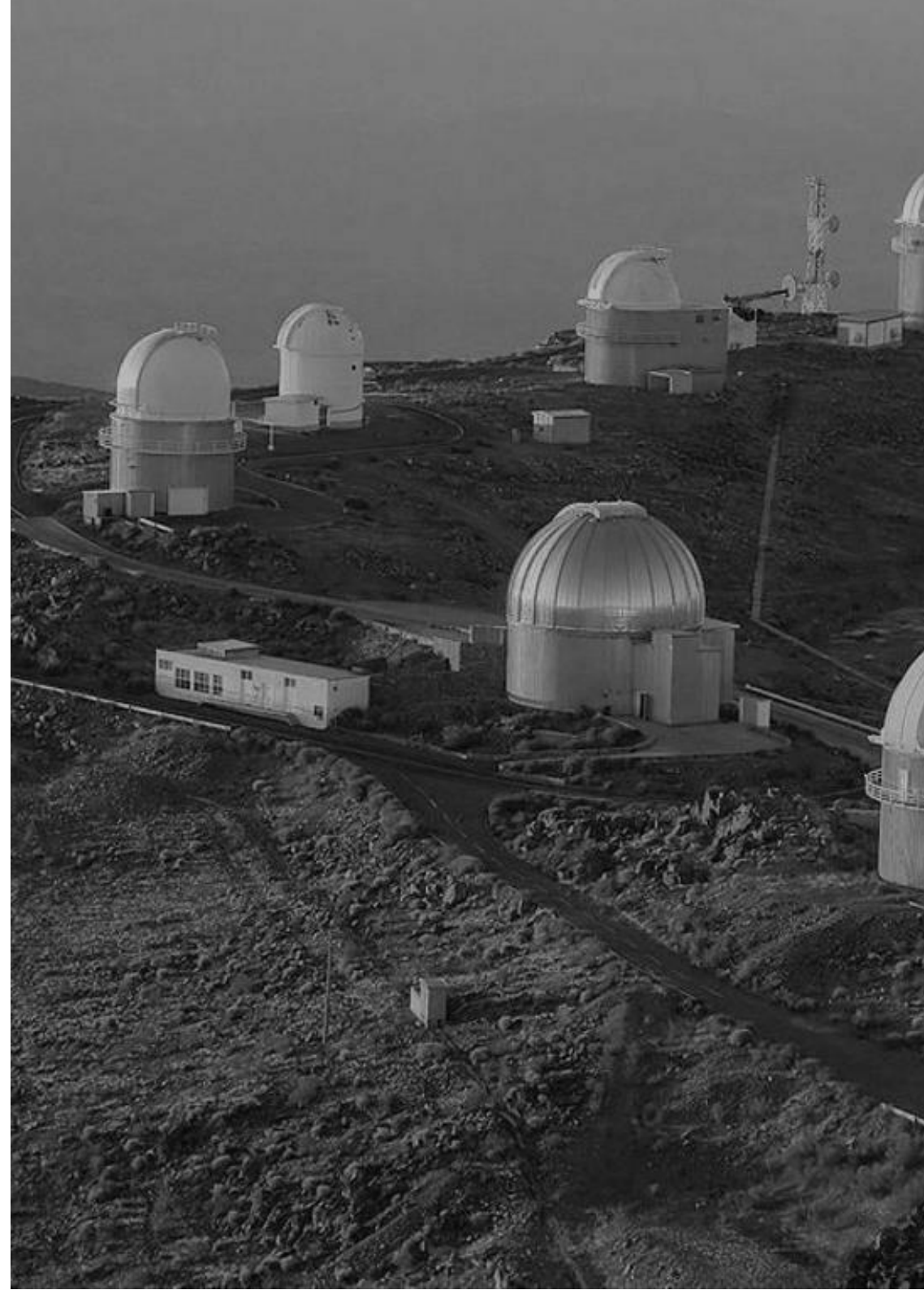
LINKS

Useful information on democratic decay is scattered across a wide range of websites, publications, and organisations.

The Links section on DEM-DEC aims to provide a useful 'one stop shop' for accessing key information, projects, and organisations.

As well as lists of key research projects and research resources, the Links section provides lists of journals, blogs, podcasts, democracy indices, policy organisations and international instruments relevant to democratic decay.

As with all other sections on DEM-DEC, users can suggest additions to the Links section.



WHAT LEADING DEMOCRACY EXPERTS SAY ABOUT DEM-DEC





DEM-DEC IS A CRUCIAL TOOL

FOR UNDERSTANDING DEMOCRATIC
BACKSLIDING AND DECAY.

UNFORTUNATELY, IT LOOKS LIKE IT WILL BE
NEEDED FOR THE FORESEEABLE FUTURE, BUT
WITHOUT UNDERSTANDING THE DYNAMICS OF
DECAY, WE CANNOT HOPE TO REBUILD
THE MOMENTUM FOR DEMOCRACY.

PROFESSOR TOM GINSBURG

LEO SPITZ PROFESSOR OF INTERNATIONAL LAW
AND PROFESSOR OF POLITICAL SCIENCE

UNIVERSITY OF CHICAGO

AUTHOR (WITH AZIZ HUQ) OF
'HOW TO SAVE A DEMOCRACY'



DEMOCRACY IS IN TROUBLE ALL OVER THE WORLD. ONE ASPIRING AUTOCRAT LEARNS FROM ANOTHER, AND DODGY PRACTICES SPREAD FROM PLACE TO PLACE. SCHOLARS NEED TO KEEP UP WITH THESE DEVELOPMENTS ACROSS COUNTRIES, ACROSS REGIONS, ACROSS LANGUAGES, AND

OVER TIME. DEM-DEC ALLOWS US TO FOLLOW THESE DEVELOPMENTS BY LINKING US ACROSS AREA-STUDIES SPECIALIZATIONS, ACROSS TOPICS AND ACROSS DISCIPLINES. IT'S AN

INVALUABLE RESOURCE

FOR A FAST-MOVING TOPIC OF WORLD-
HISTORICAL IMPORTANCE.

PROFESSOR KIM LANE SCHEPPELE
LAURANCE S. ROCKEFELLER PROFESSOR OF
SOCIOLOGY AND INTERNATIONAL AFFAIRS
PRINCETON UNIVERSITY



WORKING IN THE FIELD OF CONSTITUTION BUILDING MEANS STAYING UP-TO DATE ON EVENTS AND TRENDS AROUND THE WORLD, FROM THE SOUTH PACIFIC TO THE MIDDLE EAST.

DEM-DEC, AND ITS CURATOR TOM DALY, ARE FAST BECOMING

GO-TO RESOURCES

FOR ACCESSIBLE INFORMATION AND ANALYSIS ON THE MOST PRESSING CHALLENGES FACING DEMOCRACIES AROUND THE WORLD.

SUMIT BISARYA

HEAD OF CONSTITUTION BUILDING
INTERNATIONAL IDEA



WITH THE RISE OF THE ALTERNATIVE FÜR
DEUTSCHLAND PARTY AND GERMANY'S
INCREASINGLY POLARIZED POLITICAL ENVIRONMENT,
DEM-DEC PROVIDES AN

INDISPENSABLE PLATFORM FOR ANALYSIS AND COLLABORATION

TO UNDERSTAND THREATS TO DEMOCRACY
AND THE RULE OF LAW IN

GERMANY AND BEYOND

DR MICHAELA HAILBRONNER
UNIVERSITY OF MÜNSTER



TODAY'S DEMOCRACIES NO LONGER DIE BY VIOLENT MEANS, BUT BY 'LAW' THROUGH AN IMPERCEPTIBLE CAPTURE OF THEIR UNDERLYING INSTITUTIONS. AS A ONE-STOP SHOP FOR DEMOCRACY DEFENDERS TO GATHER INFORMATIVE AND ACTIONABLE CONTENTS TO COUNTER SUCH A PHENOMENON.

DEM-DEC SETS THE STANDARD FOR A NEW FORM OF ACADEMIC ENGAGEMENT

AT A TIME OF DEMOCRATIC URGENCY.

PROFESSOR ALBERTO ALEMANNO
GLOBAL PROFESSOR OF LAW
NYU



THE NEW GLOBAL WAVE OF AUTHORITARIANISM IS
SUBTLE AND INCREMENTAL. AS ELECTED LEADERS
TRY TO KILL DEMOCRATIC CONSTITUTIONS WITH
A THOUSAND CUTS, THE

SOUTH ASIAN REGION

VERY MUCH EXEMPLIFIES THIS GLOBAL TREND
TOWARDS CREEPING AUTHORITARIANISM.

A COMPREHENSIVE RESOURCE LIKE DEM-DEC

WILL NOT ONLY ENABLE COMPARATIVE SCHOLARS
TO COMPARE THE CONTINUITIES WITH AND THE
DIFFERENCES BETWEEN DIFFERENT JURISDICTIONS,
IT WILL ALSO

AID ACTORS WITHIN AT-RISK
JURISDICTIONS TO LEARN
FROM EXPERIENCES
ELSEWHERE.

DR TARUNABH KHAITAN

ASSOCIATE PROFESSOR
UNIVERSITY OF OXFORD
UNIVERSITY OF MELBOURNE

DR TOM DALY
DIRECTOR
OF DEM-DEC





DR TOM GERALD DALY

Tom is an academic and consultant in the area of democracy-building, public law, and human rights, and is on a mission to bring democracy defenders together and to help them in their work.

He is Assistant Director of Melbourne School of Government, Associate Director of the Edinburgh Centre for Constitutional Law (ECCL), MLS Fellow at Melbourne Law School, and Co-Convenor of the Constitution Transformation Network (Melbourne Law School). As a consultant he has worked on European Union, Council of Europe, African Union, International IDEA and Irish government projects.

Recent publications include an article, 'Democratic Decay: Conceptualising an Emerging Research Field' in the *Hague Journal on the Rule of Law*, and policy analysis of the 'third wave of autocratization' for Carnegie Europe.

Past publications include a chapter on 'Democratic Decay in 2016' in International IDEA's Annual Review of Constitution-Building. Tom has also written on democratic decay as a columnist for the I-CONnect blog and tweets @DemocracyTalk.

DEM-DEC TEAM





OUR TEAM

Two Research Editors provide valuable assistance in producing the monthly Global Research Update for DEM-DEC.

Kuan-Wei Chen is a doctoral researcher at the Faculty of Law at University of Munich (Ludwig-Maximilians-Universität München) in Germany.

Anant Sangal is a student of B.A. LL.B. (Hons.) at the National Law University Delhi, India.

Funding & Communications Coordinator Konstantina Yaneva is a recent graduate of Columbia University in political science and human rights and currently works with the Conseil Régional Île-de-France.



Want to Join the
DEM-DEC Team?

Simply fill out the form at
www.democratic-decay.org/get-involved/

DEM-DEC PARTNERS



DEM-DEC enjoys the support of a range of partners, which are leading organisations in public law and policy worldwide:

Centre for Comparative Constitutional Studies (CCCS)

Centro de Estudos sobre Justiça de Transição (Study Center on Transitional Justice (SCTJ)), Brazil)

Constitution Transformation Network (Melbourne Law School)

Constitutionally Speaking (blog – South Africa)

Democracy Reporting International (DRI)

Democratic Erosion: A Cross-University Collaboration (USA)

Edinburgh Centre for Constitutional Law

ICON-S-Israel

International Association of Constitutional Law (IACL) Blog

International Institute for Democracy and Electoral Assistance (International IDEA)


International Journal of Constitutional Law (I-CONnect) Blog

Parliamentarians for Global Action (PGA)

School of Transnational Governance (European University Institute)

V-Dem (Varieties of Democracy)

Verfassungsblog



!

Views expressed
on DEM-DEC do
not necessarily
reflect the views
of DEM-DEC's
partners

DEMOCRACY
REPORTING
INTERNATIONAL

RECONNECT

I-CONnect



European
University
Institute

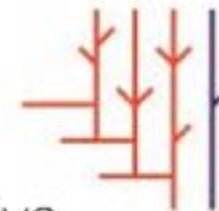
SCHOOL OF
TRANSNATIONAL
GOVERNANCE



Parliamentarians *for* Global Action
Parlamentarios para la Acción Global
Action Mondiale des Parlementaires
برلمانيون من أجل التحرك العالمي

DEMOCRATIC EROSION

a cross-university collaboration



CENTRO
DE ESTUDOS
SOBRE JUSTIÇA
DE TRANSIÇÃO



Edinburgh Centre for
Constitutional Law

Centre for Comparative
Constitutional Studies



CONSTITUTION
TRANSFORMATION
NETWORK



WANT TO
KNOW MORE?

YOU CAN GET
MORE
INFORMATION

AT

WWW.DEMOCRATIC-DECAY.ORG

OR BY E-MAILING

DR TOM GERALD DALY

DEMOCRATICDECAY@GMAIL.COM



DEM-DEC

Bringing Democracy
Defenders Together