

“An Invaluable Resource”



LEADING DEMOCRACY
DEFENDERS on DEM-DEC
& DR TOM GERALD DALY

DEM-DEC | DEMOCRATIC
DECAY & RENEWAL

www.democratic-decay.org

SINCE LAUNCH

In June 2018

Democratic Decay & Renewal (DEM-DEC) Director
Dr Tom Daly has sought feedback on DEM-DEC
from

LEADING
DEMOCRACY
DEFENDERS

WORLDWIDE

HERE'S WHAT
THEY SAID



DEM-DEC IS A CRUCIAL TOOL

FOR UNDERSTANDING DEMOCRATIC
BACKSLIDING AND DECAY.

UNFORTUNATELY, IT LOOKS LIKE IT WILL BE
NEEDED FOR THE FORESEEABLE FUTURE, BUT
WITHOUT UNDERSTANDING THE DYNAMICS OF
DECAY, WE CANNOT HOPE TO REBUILD
THE MOMENTUM FOR DEMOCRACY.

PROFESSOR TOM GINSBURG

LEO SPITZ PROFESSOR OF INTERNATIONAL LAW
AND PROFESSOR OF POLITICAL SCIENCE

UNIVERSITY OF CHICAGO

AUTHOR (WITH AZIZ HUQ) OF
'HOW TO SAVE A DEMOCRACY'



DEMOCRACY IS IN TROUBLE ALL OVER THE WORLD. ONE ASPIRING AUTOCRAT LEARNS FROM ANOTHER, AND DODGY PRACTICES SPREAD FROM PLACE TO PLACE. SCHOLARS NEED TO KEEP UP WITH THESE DEVELOPMENTS ACROSS COUNTRIES, ACROSS REGIONS, ACROSS LANGUAGES, AND

OVER TIME. DEM-DEC ALLOWS US TO FOLLOW THESE DEVELOPMENTS BY LINKING US ACROSS AREA-STUDIES SPECIALIZATIONS, ACROSS TOPICS AND ACROSS DISCIPLINES. IT'S AN

INVALUABLE RESOURCE

FOR A FAST-MOVING TOPIC OF WORLD-
HISTORICAL IMPORTANCE.

PROFESSOR KIM LANE SCHEPPELE
LAURANCE S. ROCKEFELLER PROFESSOR OF
SOCIOLOGY AND INTERNATIONAL AFFAIRS
PRINCETON UNIVERSITY



TODAY'S DEMOCRACIES NO LONGER DIE BY VIOLENT MEANS, BUT BY 'LAW' THROUGH AN IMPERCEPTIBLE CAPTURE OF THEIR UNDERLYING INSTITUTIONS. AS A ONE-STOP SHOP FOR DEMOCRACY DEFENDERS TO GATHER INFORMATIVE AND ACTIONABLE CONTENTS TO COUNTER SUCH A PHENOMENON.

DEM-DEC SETS THE STANDARD FOR A NEW FORM OF ACADEMIC ENGAGEMENT

AT A TIME OF DEMOCRATIC URGENCY.

PROFESSOR ALBERTO ALEMANNO
GLOBAL PROFESSOR OF LAW
NYU



DEM-DEC HAS BECOME AN
INVALUABLE
CONCEPTUAL AND COMPARATIVE
SOURCE

FOR
**ISRAELI
CONSTITUTIONAL
SCHOLARS**

STRUGGLING TO MAKE SENSE OF DEMOCRATIC
BACKSLIDING IN ISRAEL AND TO PLACE THESE
DEVELOPMENTS IN THE WORLDWIDE CONTEXT OF
GLOBAL DEMOCRATIC DECAY

GILA STOPLER
ASSOCIATE PROFESSOR
COLLEGE OF LAW AND BUSINESS
RAMAT GAN, ISRAEL



DEM-DEC IS AN ESSENTIAL RESOURCE
FOR SCHOLARS AND PRACTITIONERS.

DEMOCRATIC BACKSLIDING IS A COMPLEX
PHENOMENON, WITH DYNAMICS THAT CANNOT BE
PROPERLY UNDERSTOOD WITHOUT INTEGRATING
DIFFERENT DISCIPLINARY APPROACHES.

DEM-DEC OVERCOMES THIS HURDLE,

PROVIDING VALUABLE RESOURCES TO A BROAD
COMMUNITY SEEKING TO UNDERSTAND, AND
HOPEFULLY REVERSE, DEMOCRATIC BACKSLIDING.

DR RAUL SANCHEZ-URRIBARRI
ASSISTANT PROFESSOR IN LEGAL STUDIES
LATROBE UNIVERSITY



WITH THE RISE OF THE ALTERNATIVE FÜR
DEUTSCHLAND PARTY AND GERMANY'S
INCREASINGLY POLARIZED POLITICAL ENVIRONMENT,
DEM-DEC PROVIDES AN

INDISPENSABLE PLATFORM

FOR ANALYSIS AND
COLLABORATION

TO UNDERSTAND THREATS TO DEMOCRACY
AND THE RULE OF LAW IN

GERMANY AND BEYOND.

DR MICHAELA HAILBRONNER
UNIVERSITY OF MÜNSTER



THE NEW GLOBAL WAVE OF AUTHORITARIANISM IS
SUBTLE AND INCREMENTAL. AS ELECTED LEADERS
TRY TO KILL DEMOCRATIC CONSTITUTIONS WITH
A THOUSAND CUTS, THE

SOUTH ASIAN REGION

VERY MUCH EXEMPLIFIES THIS GLOBAL TREND
TOWARDS CREEPING AUTHORITARIANISM.

A COMPREHENSIVE RESOURCE LIKE DEM-DEC

WILL NOT ONLY ENABLE COMPARATIVE SCHOLARS
TO COMPARE THE CONTINUITIES WITH AND THE
DIFFERENCES BETWEEN DIFFERENT JURISDICTIONS,
IT WILL ALSO

AID ACTORS WITHIN AT-RISK
JURISDICTIONS TO LEARN
FROM EXPERIENCES
ELSEWHERE.

TARUN KHAITAN

ASSOCIATE PROFESSOR
UNIVERSITY OF OXFORD
UNIVERSITY OF MELBOURNE



AS A RESEARCHER ANALYZING THE
CHARACTERISTICS OF
DEMOCRATIC DECAY
IN ISRAEL,

I FIND DEM-DEC TO BE AN INVALUABLE TOOL NOT
ONLY FOR UNDERSTANDING, THROUGH COMPARATIVE
ANALYSIS, THE IMPLICATIONS OF PARTICULAR POLICIES
AND LAWS, BUT ALSO AS AN

IMPORTANT
TOOL

FOR EXPLAINING AND EXEMPLIFYING SUCH
IMPLICATIONS IN
DISCUSSIONS WITH POLICY
AND LAW MAKERS.

TAMAR HOSTOVSKY BRANDES
ASSISTANT PROFESSOR
ONO ACADEMIC COLLEGE



CONCERN FOR DEMOCRATIC DECAY SPARKED BY
DISAPPOINTMENTS IN OLDER DEMOCRACIES
INTERSECTS IN INTERESTING WAYS WITH
DISAPPOINTMENTS CONCERNING MANY

AFRICAN STATES' FAILED TRANSITION

TO STABLE LIBERAL CONSTITUTIONALISM AND THE
STUBBORN ENDURANCE OF AUTHORITARIAN
CONSTITUTIONALISM. DEM-DEC, WITH ITS GLOBAL,
INTERDISCIPLINARY AND COLLABORATIVE APPROACH,
PROVIDES A

WEALTH OF RESOURCES FOR ANALYSING AFRICAN CONTEXTS.

DUNCAN MUNABI

DIRECTOR, CENTER FOR CONSTITUTIONAL
STUDIES & LECTURER IN LAW
KABARAK UNIVERSITY (KENYA)



WORKING IN THE FIELD OF CONSTITUTION
BUILDING MEANS STAYING UP-TO DATE ON
EVENTS AND TRENDS AROUND THE WORLD,
FROM THE SOUTH PACIFIC TO THE MIDDLE EAST.

DEM-DEC, AND ITS CURATOR
TOM DALY, ARE FAST BECOMING

GO-TO RESOURCES

FOR ACCESSIBLE INFORMATION AND ANALYSIS
ON THE MOST PRESSING CHALLENGES FACING
DEMOCRACIES AROUND THE WORLD.

SUMIT BISARYA

HEAD OF CONSTITUTION BUILDING
INTERNATIONAL IDEA



TOM IS
ONE OF THE
LEADING
SCHOLARS
IN THE WORLD
THESE DAYS DEALING WITH
DEMOCRATIC DECAY.

WOJCIECH SADURSKI
CHALLIS PROFESSOR OF JURISPRUDENCE
UNIVERSITY OF SYDNEY



WHEN DEMOCRATIC INSTITUTIONS FAIL AND THE
RULE OF LAW IS UNDER SYSTEMIC THREAT IF NOT
SUBJECT TO OPEN SYSTEMIC ATTACKS,
INDIVIDUALS MUST STEP UP.

TO EFFECTIVELY STEP UP,
KNOWLEDGE AND ACCESS
TO KNOWLEDGE ARE KEY.

THIS IS WHY

DEM-DEC IS SUCH A TIMELY
AND WELCOME INITIATIVE.

IT SHOULD BE USEFUL TO ANYONE WISHING TO
BETTER UNDERSTAND AND FIND SOLUTIONS TO
THE ONGOING PROCESS OF DEMOCRATIC DECAY.
AS A PUBLIC LAW SCHOLAR FOCUSING MOSTLY
ON THE SITUATION IN THE EUROPEAN LEGAL
SPACE, I HAVE FOUND DEM-DEC TO BE BOTH
PARTICULARLY HELPFUL AND INNOVATIVE BY
PROVIDING AN EASY AND STRUCTURED ACCESS
TO A UNIQUE WEALTH OF RESOURCES FROM
MULTIPLE JURISDICTIONS AND MULTIPLE
DISCIPLINES.

LAURENT PECH

PROFESSOR OF EUROPEAN LAW
MIDDLESEX UNIVERSITY LONDON



DEM-DEC IS A

TREASURE TROVE

OF INFORMATION ON DEMOCRATIC
BACKSLIDING. FOR ANYONE INTERESTED IN
UNDERSTANDING THE

TRANSNATIONAL DIMENSIONS

OF HOW DEMOCRACIES DECLINE, DEM-DEC IS AN
ESSENTIAL RESOURCE – COMPREHENSIVE,
ACCESSIBLE, AND BEAUTIFULLY ORGANIZED.

**TOM DALY HAS CREATED A
PUBLIC GOOD THAT WILL
BENEFIT SCHOLARS,
POLICYMAKERS, AND
ACTIVISTS ACROSS THE
GLOBE.**

LAURENCE R. HELFER

PROFESSOR
DUKE UNIVERSITY



DEM-DEC OFFERS AN EXCELLENT HAPPY MEDIUM
THAT

BRIDGES LEGAL SCHOLARSHIP WITH THE PRACTICAL REALITY

OF DEMOCRACY TODAY IN DARKNESS, SO IT'S
NOT JUST A GREAT MEANS TO UNDERSTAND
DEMOCRATIC PRINCIPLES AND GLOBAL
CHALLENGES, BUT ALSO A

GREAT TOOLKIT

THAT HELPS CREATE REAL, WORKING SOLUTIONS
IN DEFENDING DEMOCRACY — AND IT'S JUST
GETTING STARTED.

HASANAL ZAF

FOUNDER AND PRESIDENT
WE THE PEOPLE (NGO)

DR TOM DALY
CREATOR
OF DEM-DEC





Dr Tom Gerald Daly

Tom is an academic and consultant in the area of democracy-building, public law, and human rights, and is on a mission to bring democracy defenders together and to help them in their work.

He is Assistant Director of Melbourne School of Government, Associate Director of the Edinburgh Centre for Constitutional Law (ECCL), and Co-Convenor of the Constitution Transformation Network (Melbourne Law School). As a consultant he has worked on European Union, Council of Europe, African Union, International IDEA and Irish government projects.

His current book project concerns the role of public law in countering 'democratic decay' worldwide. He has written widely on democratic decay and renewal and tweets @DemocracyTalk.

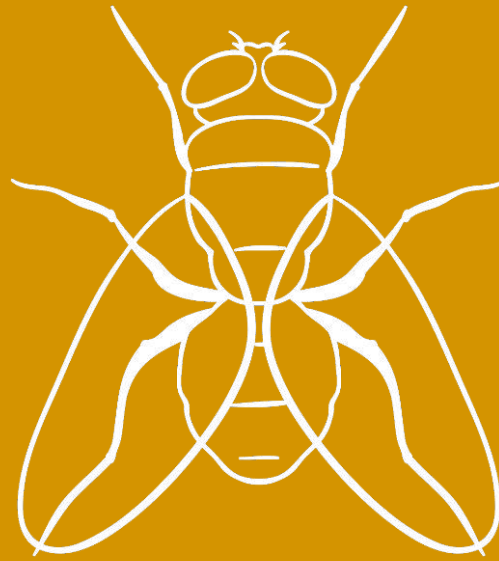
Recent publications include an article, 'Democratic Decay: Conceptualising an Emerging Research Field' in the *Hague Journal on the Rule of Law*. Policy publications include a chapter on 'Democratic Decay in 2016' in International IDEA's *Annual Review of Constitution-Building*.

WANT TO
KNOW MORE?

YOU CAN GET
MORE
INFORMATION

AT
WWW.DEMOCRATIC-DECAY.ORG

OR BY E-MAILING
DEMOCRATICDECAY@GMAIL.COM



DEM-DEC

Bringing Democracy
Defenders Together